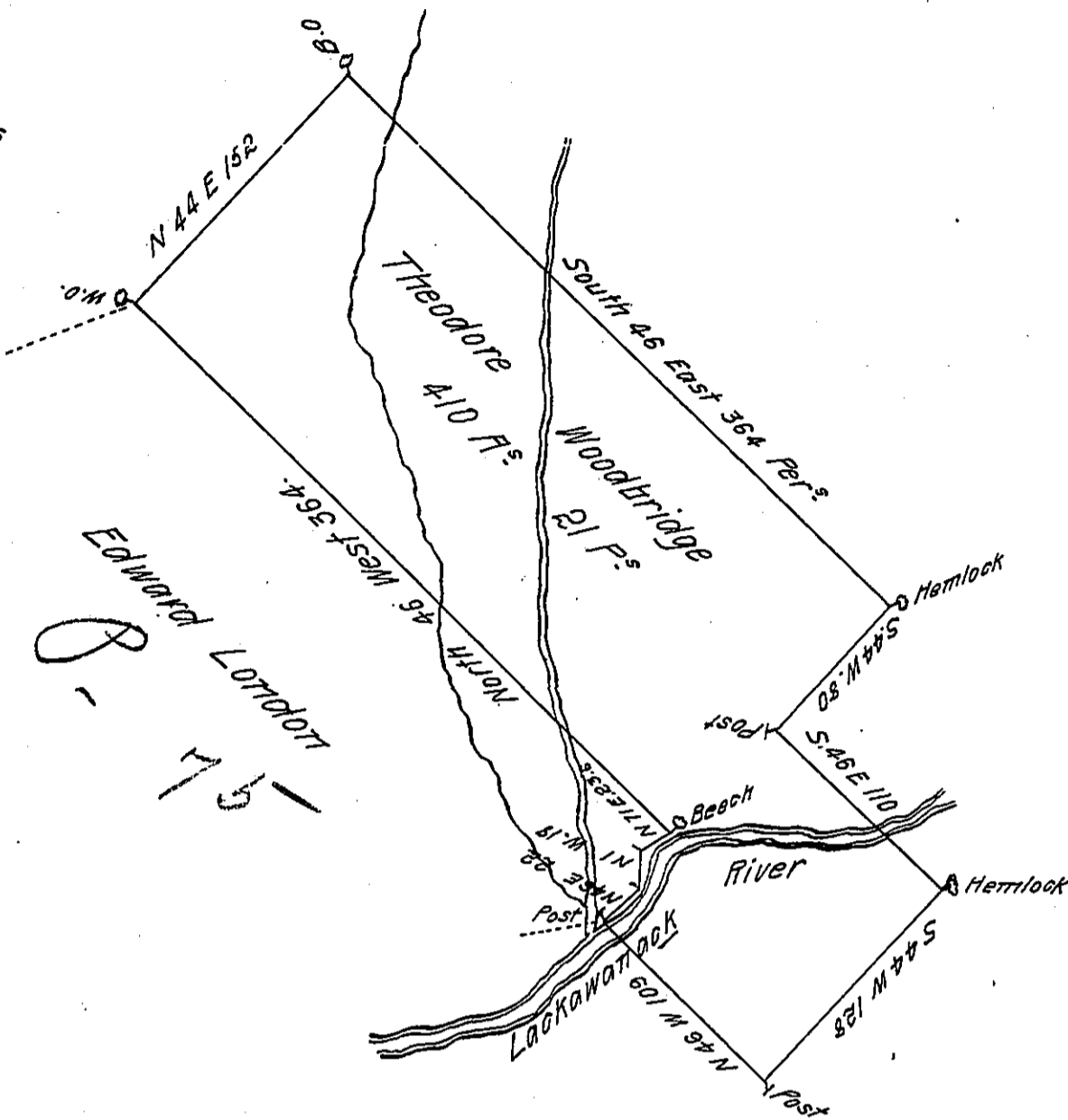


Scale 100 perches to the inch



In pursuance of a Warrant dated the twenty third day of January 1804. Surveyed the eighth day of September 1804 by Thomas Sambourne late Deputy Surveyor, for Theodore Woodbridge, the above described tract of land Situate on the Waters of Lackawanna creek in the County of Luzerne Containing four hundred and ten acres and twenty one perches and the Usual allow^{ce} of Six percent for roads &c

Ex^d and certified by

Samuel Cochran Esq^t

Geo. Haines D. S.

Surveyor Gen^l

IN TESTIMONY that the above is a copy of the original remaining on file in the Department of Internal Affairs of Pennsylvania, made conformably to an Act of Assembly approved the 16th day of February, 1833, I have hereunto set my Hand and caused the Seal of said Department to be affixed at Harrisburg, this twenty eighth day of JULY 1911

Henry Houck
 Secretary of Internal Affairs.